

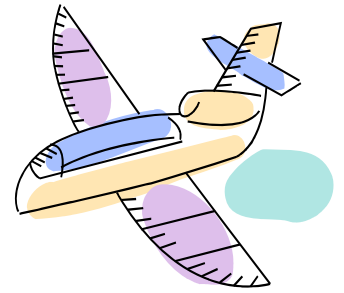


"Ignorance is not Bliss" - How what you don't know can hurt you

Traveling Tips for International Student and Faculty

Traveling Outside the U.S.

- If you are planning to travel during any school breaks, come to OISS at least two weeks before you plan to. We will not process travel endorsement on the same day!
- DO NOT make flight arrangements prior to contacting OISS, things might be more complicated than you anticipate.
- If you plan to visit a country other than your homeland, check with that country's embassy for their policies on visa issuances. You might need to obtain a visa to enter that country.



To Re-enter the U.S. You Must Have:

- **VALID VISA:** As long as the visa is F-1 visa/J-1 Visa type, and is not expired, the student does not need to apply for a new visa, if he or she plans to exit and reenter the U.S. with an I-20/DS-2019 to continue studies. If your visa expires while you are in the U.S., the next time you travel abroad you must obtain a new visa in order to be readmitted to the U.S.
- **VALID PASSPORT:** Your passport should be current at all times. If an expiration date is imminent it is important to get your passport renewed immediately.
- **VALID I-20/DS-2019:** Your I-20/DS-2019 must be endorsed by OISS within the semester you plan to travel.
- **THE PDSO ENDORSES YOUR CURRENT I-20/DS-2019 ON PAGE 3.** However, if any of the information on page 1 of the I-20/DS-2019 has changed, you will need a new I-20/DS-2019 before traveling. This is why it is important to allow enough time for your request for travel endorsement!
- **LETTER VERIFYING ATTENDANCE AT RUTGERS:** A letter will be written for you verifying full-time attendance at the university in case you are asked to provide verification of enrollment status.
- **PROOF OF COURSE REGISTRATION:** It is advisable to request a proof of course registration from the Registrar in case you are asked to provide verification of continued attendance at Rutgers.



Traveling Within the U.S.

If you plan to travel, within the U.S. you should consider doing the following:

- Take a photocopy of your passport with you and also your Rutgers I.D. card.
- Leave the other immigration documents and social security card at home in a safe place.
- You must carry proof of your immigration status at all times.

